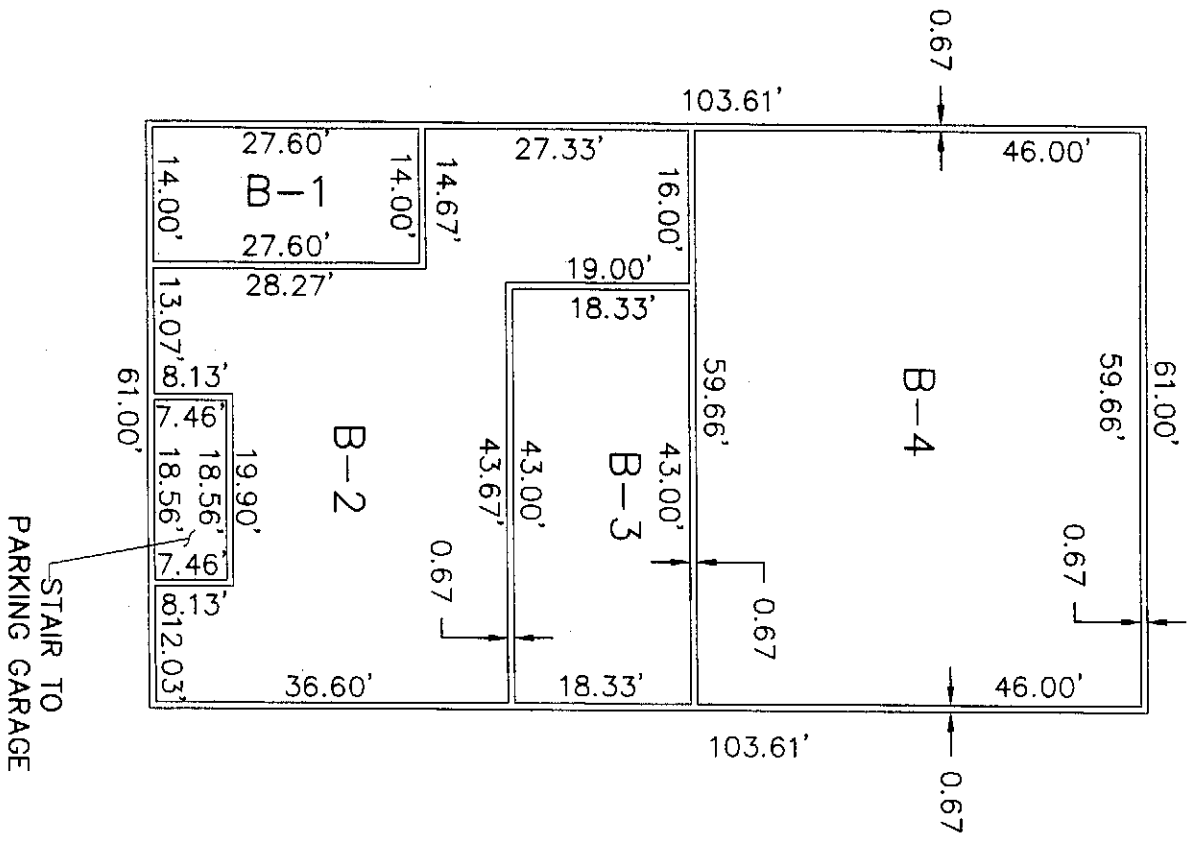
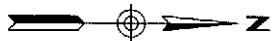


**BUILDING B  
HORIZONTAL BOUNDARIES**



| UNIT # | INTERNAL AREA (SQ-FT) | FINISHED FLOOR ELEVATION | FINISHED CEILING ELEVATION |
|--------|-----------------------|--------------------------|----------------------------|
| B-1    | 386.12                | 1127.45'                 | 1136.78'                   |
| B-2    | 1,911.24              | 1127.45'                 | 1136.78'                   |
| B-3    | 788.10                | 1127.45'                 | 1136.78'                   |
| B-4    | 2,744.36              | 1127.45'                 | 1136.78'                   |
| L.C.E. | 138.46                | 1127.45'                 | 1136.78'                   |



**LANDMARK TOWERS CONDOMINIUM**  
A REPLAT OF BUILDING B OF "LANDMARK TOWERS CONDOMINIUM"  
PHOENIX, AZ



**GRIFFIN-JACOBS  
ENGINEERING, INC.**  
CIVIL ENGINEERING  
LAND PLANNING  
6643 N. 8TH AVENUE  
PHOENIX, ARIZONA 85013  
T. 602.212.1279 F. 602.212.1553



REVISIONS:

DESIGN BY: BBI